

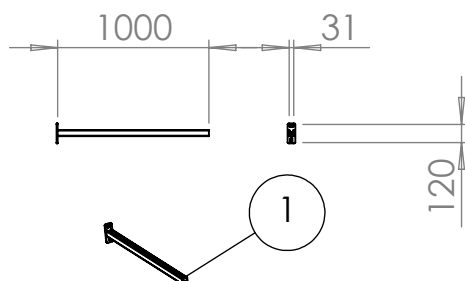
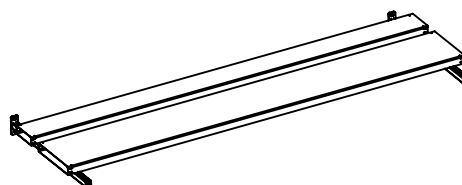
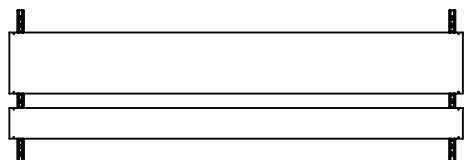
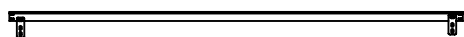
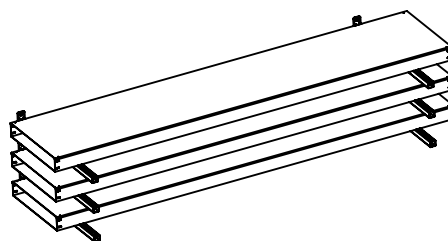
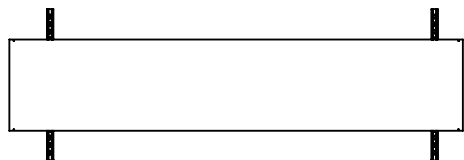
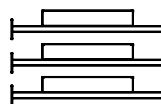
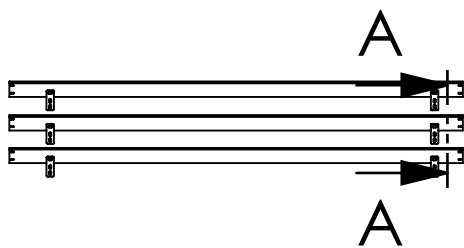
4

3

2

1

section A-A


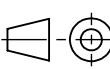


ITEM	MODEL	Fn	Pcs	REF
1	Cantilever arm 41x82	1980N	685	82002625

*The support must be located every 2500 mm on overhanging sections that do not already have supports for the tray itself.

*The space between trays shall never be less than 100 mm.

*In the areas where it is applied, adjust and shorten the support section.

A	Initial release								05/12/2025	ANSA			
Rev.	Modification								Date	Name			
This drawing is property of INSERTEC. Must not be copied or transferred to third parties in any way without written authorization.													
Tolerance for dimensions without tol. according to ISO 2768-mK										Date	Name	Material	
More than	0.5	3	6	30	120	400	1000	2000	Drawn	05/12/2025	SERO		
Less	3	6	30	120	400	1000	2000	4000	Checked	05/12/2025	ANSA	Weight (kg)	
Machine Tool	±0.1	±0.1	±0.2	±0.3	±0.5	±0.8	±1.2	±2					
Welded		±0.5	±1	±1.5	±2	±3	±4	±6	Verified	05/12/2025	ANSA		
Customer:							Format:		Title				
ALINVEST							A4		E-2558 CABLE TRAY SUPPORT PLANT CABLE ROUTING				
							Scale:						
							1:50						
 Furnaces & Refractories							Project Methode:		Part Number				Revision
									2558-0000-GEN-E-DWG-SPT-A Cable tray support				
									Customer Number				Sheet
									1/1				

4

3

2

1